

AVANTO FAQs.

Traceability. Quality. Efficiency.





General Information

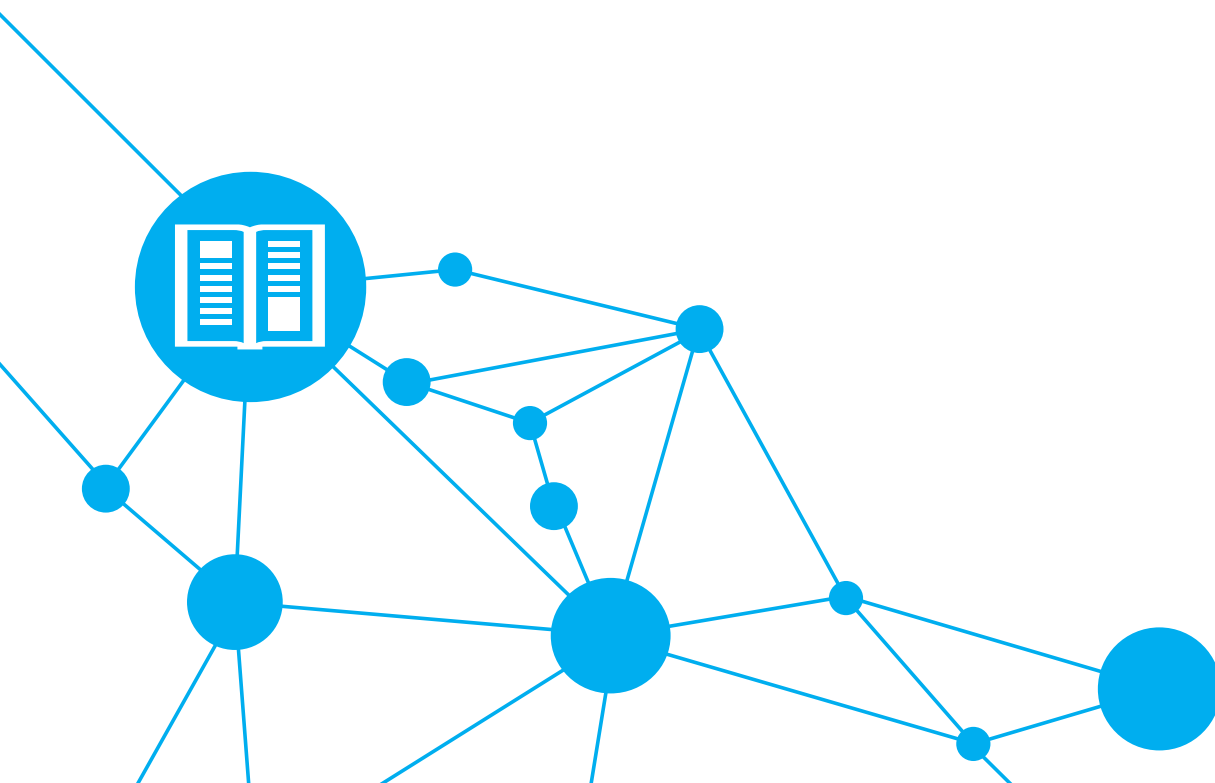
What is AVANTO™ ?

AVANTO is an advanced, cloud-based welding management solution that allows customers to capture, monitor and analyse the vast amount of data that is required to meet compliance to welding industry standards. Covering every step in the welding workflow, it enhances traceability, efficiency and quality assurance. In essence, AVANTO allows you to meet industry standards whilst removing cost and complexity from your business.

How does AVANTO work?

Accessible via any internet connected PC, AVANTO allows you to create and manage all your welding jobs, everything from large and complex projects to a single weld. Create, qualify or update your Welding Procedure Specifications (WPS) in digital form or simply upload your existing WPSs to begin the audit trail for every welding job. Assign qualified resources to each job including materials, consumables and welding machines. Keep track of your welders' qualifications and ensure only those with valid qualifications are assigned to jobs. Manage the validation periods of your welding machines, simply and easily.

Extend all this information to supervisory personnel and welders using the AVANTO app for mobile devices. Quality assurance personnel can add any testing reports to jobs and even upload photos of visual inspections via the mobile app. All this documentation can be easily compiled into a report for the end-customer with a few clicks providing full traceability without all the hassle.



What are the benefits of AVANTO?

AVANTO delivers enhanced welding standards compliance and traceability whilst increasing efficiency and improved quality to your welding processes. All of this translates directly into cost savings for your business.

How much does AVANTO cost?

AVANTO is charged as a simple ongoing subscription fee based on the number of users in your organisation. It is available as a free trial for a limited period. Please visit www.linde-avanto.com for more information.

How do I know my data is safe in the cloud?

The cloud is many times more secure and more reliable than locally hosted file storage. AVANTO is hosted by Salesforce, one of the largest and most respected cloud-based solution providers globally. Every day more than 150,000 organisations rely on Salesforce to manage their data reliably and securely. Significant investment is made by Salesforce in the latest technology so you don't have to. For more information, visit Trust.salesforce.com, the Salesforce community for real-time information on system performance and security. For more information on data privacy visit <https://www.salesforce.com/company/legal/agreements.jsp>

Do I need to install any software?

No. As a cloud-based solution, AVANTO is accessible via any modern Internet browser and therefore requires no installation. To take advantage of AVANTO on mobile devices for shop floor based personnel, the AVANTO app can be downloaded from either Google Play app store or the Apple app store by searching for "Linde AVANTO", or see the links below:

Google Play Store – <https://play.google.com/store/apps/details?id=com.oinio.linde.isw.test&hl=en>

iOS App Store – <https://itunes.apple.com/us/app/avanto/id1191749233?mt=8>

What web browsers do I need?

AVANTO works with all modern web browsers, for more information on supported browsers please visit https://help.salesforce.com/articleView?id=getstart_browser_aloha.htm&language=en_US&type=0

For a free trial visit www.linde-avanto.com and complete the simple contact us form.



Getting started

How do I use AVANTO on my PC?

The entire AVANTO service is web-based so all you need is a web browser to log in directly over the cloud. Linde will supply you a link, user names and initial password.

How do I download the AVANTO app for my smartphone or tablet PC?

For mobile devices, you will need to download the AVANTO app from the Apple app store or the Google Play app store by searching for "Linde AVANTO", or see the links below:

Google Play Store – <https://play.google.com/store/apps/details?id=com.oinio.linde.isw.test&hl=en>

iOS App Store – <https://itunes.apple.com/us/app/avanto/id1191749233?mt=8>

What kind of devices does AVANTO mobile app work on?

AVANTO runs on all Apple mobile devices (smartphones, tablets, etc.) with iOS8 and above, and on Android devices with Android 5.0 and above.

Can I use AVANTO offline?

Yes. You can use AVANTO offline on your mobile device if it is not connected to the mobile operator's network or you have no WiFi connection. When a wireless network connection becomes available you can log back on to the AVANTO cloud and the system synchronises all the information you have stored locally on your mobile device with the cloud.

How many users in my company can access the AVANTO service?

AVANTO supports an unlimited number of users. For more information please visit www.linde-avanto.com and complete the simple contact us form.

I want to limit who sees information in my organisation – how do I do that?

AVANTO manages access to information by having different roles. 'Engineers' can do everything in the system including managing WPS information. Administrators can manage everything except WPSs. Finally, welders and quality assurance staff can be setup as standard users with limited access relevant only to their own work and limited ability to make changes.



Using AVANTO

How do I train my team to use AVANTO?

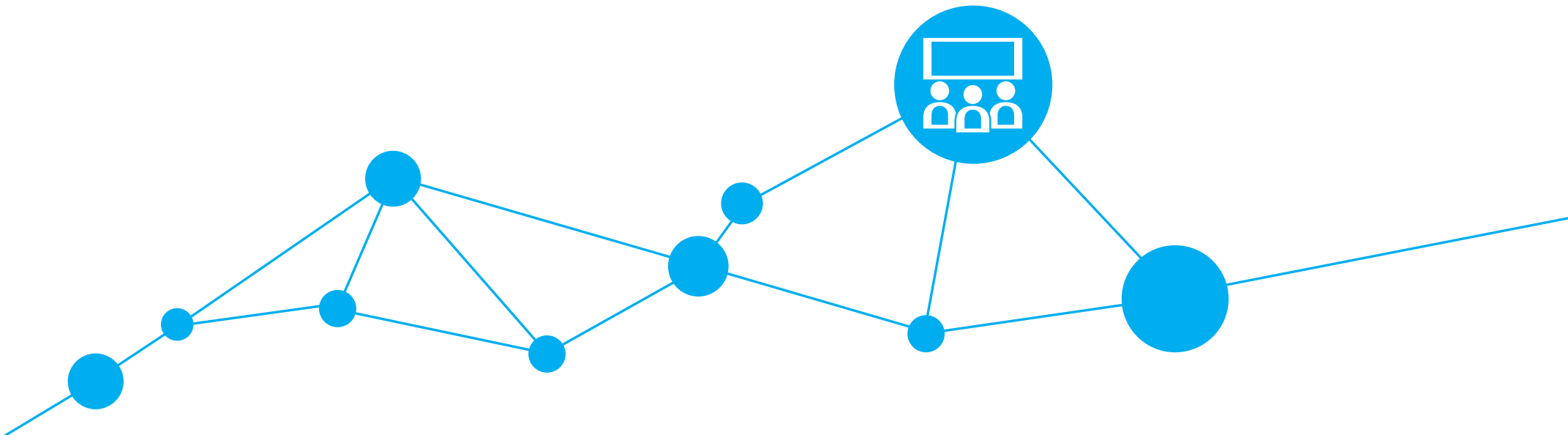
Once you become an AVANTO customer you can find simple training videos and manuals for the team on the AVANTO cloud solution home page when logging in.

AVANTO contains a lot of options to input information – do I really need to fill in all of it?

No, you only have to fill out the very few fields marked as mandatory in red. The rest is up to you based on your needs so you can be as minimal or comprehensive as you wish.

What happens to my data if I choose to disconnect from the service?

Should you wish to discontinue your AVANTO subscription, you can continue to access your information for local backup for 30 days after this date so you have plenty of time to save what you need.



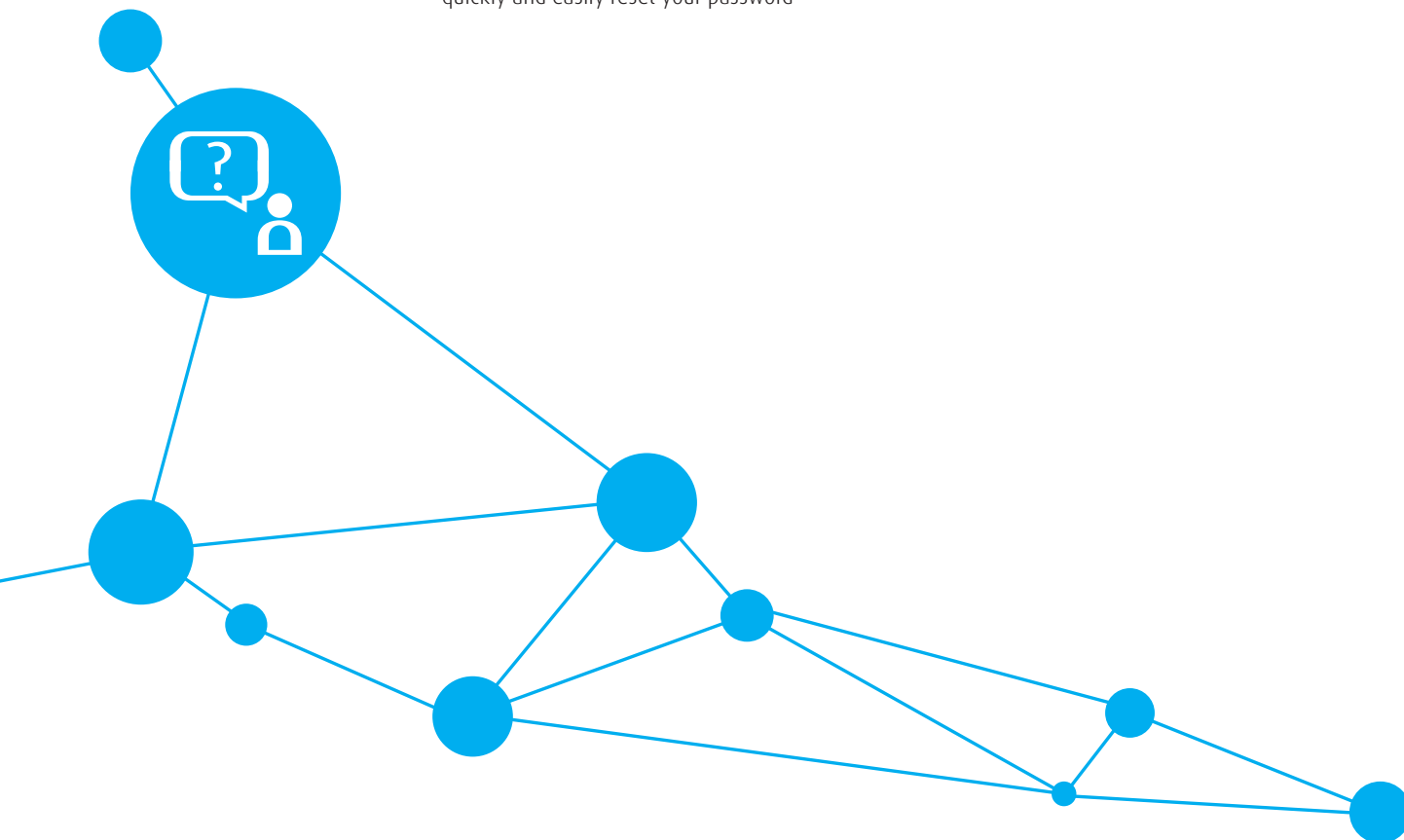
Troubleshooting

What should I do if I forget my password?

You will be asked to enter your password every time you access AVANTO. On the login screen, there is a link for resetting your password. If you cannot remember your password, simply click on this link and you will be sent an email that enables you to quickly and easily reset your password

Who do I contact if I have an issue or run into technical problems?

You can contact your local customer service centre and speak to a dedicated AVANTO specialist who can help you with your technical queries. They are trained to get you back up and running in no time.



Getting ahead through innovation.

With its innovative concepts, Linde is playing a pioneering role in the global market. As a technology leader, it is our task to constantly raise the bar. Traditionally driven by entrepreneurship, we are working steadily on new high-quality products and innovative processes.

Linde offers more. We create added value, clearly discernible competitive advantages, and greater profitability. Each concept is tailored specifically to meet our customers' requirements – offering standardised as well as customised solutions. This applies to all industries and all companies regardless of their size.

If you want to keep pace with tomorrow's competition, you need a partner by your side for whom top quality, process optimisation, and enhanced productivity are part of daily business. However, we define partnership not merely as being there for you but being with you. After all, joint activities form the core of commercial success.

Linde – ideas become solutions.

Linde AG

Linde Gases Division, Seitnerstrasse 70, 82049 Pullach, Germany

Phone +49.89.7446-0, Fax +49.89.7446-1216, www.linde-avanto.com, www.linde-gas.com/avanto

Linde is a trading name used by companies within The Linde Group. The Linde logo and the Linde word are trademarks of Linde AG.

AVANTO™ is an EU-registered trademark of The Linde Group. Trademark registrations and their status may differ from one location to another. Copyright © 2017. Linde AG.